

Within and beyond living memory

For all our within living memory collections we would advise linking their use with an invitation to parents and other adults to visit so pupils can interview them about their childhood experiences. Often the presence of artefacts helps adults remember their childhood with greater clarity and depth than they would otherwise.

Toys, games and pastimes and Changing toys, games and pastimes

Toys, games and pastimes children's parents, carers or grandparents will be familiar with for exploring change in a familiar context. Changing toys includes some matched items from different decades to illustrate the concept of change more explicitly.



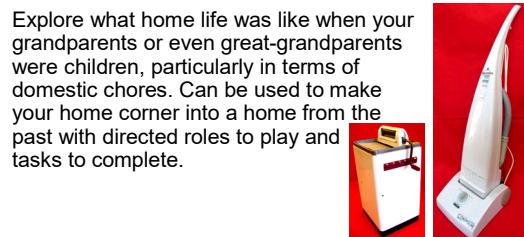
Holidays within living memory



How have holidays changed within living memory? What has changed and what has stayed the same since the 1950/60s?

Home life within living memory

Explore what home life was like when your grandparents or even great-grandparents were children, particularly in terms of domestic chores. Can be used to make your home corner into a home from the past with directed roles to play and tasks to complete.



Changing technology

We have recently assembled a collection that explores how everyday technology has changed over time. The collection includes objects, images and timelines relating to household technology, cameras, telephones, music, writing and other communication technology. We have also included images and a timeline to explore changing transport.

Possible KS2 thematic study



How school life has changed

Features items for the Victorian era, when education became universal, through to the 1990s. Ideal for approaching the difficult concept of CHANGE and to involve adults to talk, or be questioned, about their school days.



Victorian Schools

If your school has been established for some time, you may want to base your local study around it. Could also be used as part of a thematic study of education over time.



Victorian Seaside—possibly for KS2 local

Explore a Victorian family's seaside holiday via a lively story (included) which mentions most of the artefacts. Then create a vivid display or museum exhibit.



Victorian home life

Looks at the home life of a rich Victorian family and their servants using a lively story which mentions each artefact to illustrate how the items were used and by whom. What is different from children's home life today?



Castle life

Recreate life in a medieval castle and role play creating a banquet fit for the Lord and Lady using the cooking equipment, tableware and sumptuous wall hangings.



Nursery Rhymes box

For the youngest children, these artefacts illuminate five well-known rhymes, via practical, fun activities that lead them on their first steps into the past.



Significant past events

Great Fire of London resources

Explore the fire through artefacts, timeline story, maps and other resources. How well does a bucket chain/ squirt work?



Titanic—also for KS2 local study



An historic event with many local links, this collection is designed to offer an intriguing mystery for pupils to solve as a stimulus for a study of the sinking of the Titanic.

WW2 Evacuees also for KS2 local study



Explore what life would have been like for the children and their teachers/carers who were evacuated during WW2.



WW2 Home Front also for KS2 local

Brings to life a study of life on the home front during the Second World War. What was life like for the men, women and children who remained in Britain during the war?



World War I

For exploring the event, commemorating the centenaries of major battles and its ending, or for Remembrance events.



Significant individuals

Mary Anning

Explore the life and work of a young girl who discovered the first full fossilized remains of an ichthyosaur, plesiosaur and a pterodactyl yet whose achievements were only fully recognised in recent times.



Queens: Lives and Times



Costume and role play items join artefacts relating to Elizabeth I, Queen Victorian and Elizabeth II to help pupils compare their lives and what life was like at the times they lived, particularly in relation to all forms of communication.



Florence Nightingale

Being locally, nationally and internationally famous, Florence is an ideal historical figure to study. Children try to work out to whom the mystery trunk belongs, encountering evidence of her work and legacy as they do.



Mary Seacole

At the time of the Crimean War Mary Seacole was as famous as Florence Nightingale then memory of her almost faded, but she was recently voted greatest black Briton.



Please phone 01962 874802 to check availability of any collections you are interested in loaning before asking your school's Finance Officer to complete our order form: <https://tinyurl.com/history-order-form>.

Prices: Subscribing schools = £25 for one week, £40 for two weeks and £50 for three weeks. Non-subscribing schools will be charged an additional £35 per loan. Non-Hampshire schools will be charged VAT at 20%.

Hampshire controlled schools (and some Hampshire academy schools) can opt to have boxes transported by County Supplies but must opt for a 3 week loan period, although due to the delivery rota, they will only be in schools for a maximum of 2 weeks during that period.

To support key stage 2 studies

Stone, Bronze and Iron Age

Explore the tools and weapons people who lived so long ago managed to make from the very limited range of natural resources available to them and to explore the technological changes that took place across the three periods.



Anglo-Saxon Life through Death



Explores what grave goods can tell us about Saxon life and culture, including men's and women's roles. Also explores conversion from paganism to Christianity by examining changing burial practices

Roman soldiers: fighters or builders?

Explore the pivotal role the Roman army played in the 'Romanisation' of Roman provinces like Britannia and why they were nicknamed 'Marius' Mules'.



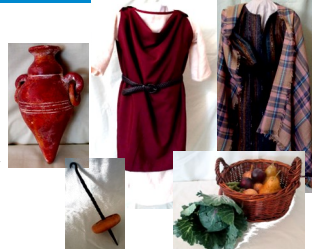
Viking Life box

Explores aspects of Viking life and culture such as war and conflict, daily life, beliefs.



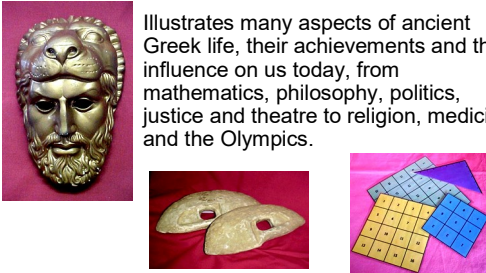
Life in Roman Britannia

Explore the lifestyles of Britons and Romans/Romano-Britons and whether Roman innovations and introductions impacted everyone or outlasted the Roman occupation.



Ancient Greek box

Illustrates many aspects of ancient Greek life, their achievements and their influence on us today, from mathematics, philosophy, politics, justice and theatre to religion, medicine and the Olympics.



Roman Villa Excavation box

Designed to create a mock excavation of a Roman villa site. The collection features the sort of fragmentary items that would be found during such a dig. This teaches as much about *how historians and archaeologists work and how we know* about the Romans as *what we know*.



Mayan resources box

Explore this mysterious civilization through artefacts, books and other resources that illustrate aspects of Mayan life, knowledge and beliefs.



Ancient Egyptian Achievements

This collection asks pupils to decode evidential images from real Egyptian tombs and match them to replica artefacts to see what they tell us about Egyptian technology and other achievements.



History Artefact Loans 2023-24

From the History Curriculum Centre

